



## Excessive Heat Through Rest of this Week | Storm Chances increase Significantly this Weekend

### KEY POINTS

- Excessive Heat Warning in effect across the entire area through today. Warning for larger population centers through Saturday
- Isolated to scattered thunderstorms possible across south-central and southwest AZ today
- More expansive thunderstorms with a Moderate severe weather risk this weekend - mainly Sunday

### WEATHER RISK OUTLOOK

Risk levels incorporate potential impacts from weather hazards and likelihood of occurrence. The weather hazard with the greatest risk will be listed first in the matrix.

	Fri 7/28	Sat 7/29	Sun 7/30	Mon 7/31	Tue 8/1
<b>Phoenix Metro Area</b> Including Maricopa & NW. Pinal Counties	Heat Thunderstorms	Heat Thunderstorms	Heat Thunderstorms	Heat Thunderstorms	Heat Thunderstorms
<b>High Terrain SC AZ</b> S. Gila County and Tonto NF Foothills in NE Maricopa County	Heat Thunderstorms	Heat Thunderstorms	Thunderstorms Heat	Thunderstorms Heat	Thunderstorms Heat
<b>Southwest Arizona</b> Including La Paz & Yuma Counties	Heat Thunderstorms	Heat Thunderstorms	Heat Thunderstorms	Heat Thunderstorms	Heat Thunderstorms
<b>Southeast California</b> Including Imperial & Eastern Riverside Counties	Heat	Heat Thunderstorms	Heat Thunderstorms	Heat Thunderstorms	Heat Thunderstorms

<b>Risk Levels</b>	Little to None	Minor	Moderate	Major	Extreme
--------------------	----------------	-------	----------	-------	---------

### DETAILS

## Phoenix Metropolitan Area

**Impacts:**

• Extreme Risk for heat-related illnesses for entire population, pets, and livestock due to long duration heat, with little to no relief overnight. Impacts likely in most health systems, heat-sensitive industries and infrastructure.

**Timing:**

Major to Extreme HeatRisk through Saturday; Moderate HeatRisk beginning Sunday

- **Excessive Heat Warning** in effect through Saturday

**Impacts:**

Gusty winds, small hail, areas of dense blowing dust, and heavy rainfall

**Timing:**

Daily

- Slight chance of thunderstorms today (10-20% chance); Scattered to Numerous storms Saturday through Tuesday (30-60% chance)
- Probability of gusty winds in excess of 35 mph accompanying any thunderstorms is around 30% today
- Greater threat of stronger storms and organized severe threat Saturday through Tuesday - Moderate Risk of strong to severe storms Sunday

## Higher Terrain South Central Arizona (Southern Gila County & Tonto NF Foothills in Maricopa County)

**Impacts:**

• Major Risk for heat-related illnesses for for entire population, pets, and livestock due to long duration heat, with little to no relief overnight. Impacts likely in some health systems, heat-sensitive industries and infrastructure.

**Timing:**

Major HeatRisk Today; Minor to Moderate HeatRisk beginning Saturday

- **Excessive Heat Warning** in effect through this evening (Advisory for mountain areas)

**Impacts:**

Gusty winds, small hail, and heavy rainfall

**Timing:**

Daily

- Scattered thunderstorms today(30-50% chance) becoming more numerous 60-80% Saturday through Tuesday
- Probability of gusty winds in excess of 35 mph accompanying any thunderstorms is 50-70%
- Moderate Risk of strong to severe storms Sunday

## Southwest Arizona (La Paz & Yuma Counties)

**Impacts:**

• Extreme Risk for heat-related illnesses for entire population, pets, and livestock due to long duration heat, with little to no relief overnight. Impacts likely in most health systems, heat-sensitive industries and infrastructure.

**Timing:**

Major to Extreme HeatRisk through Saturday; Moderate HeatRisk beginning Sunday

- **Excessive Heat Warning** in effect through this evening - except Yuma and Colorado River communities through Saturday

**Impacts:**

Strong gusty winds, areas of dense blowing dust, small hail, and heavy rainfall

**Timing:**

Daily

- Isolated thunderstorms (less than 20% chance) through Saturday
- Thunderstorm chances increase ~50% Sunday through Tuesday with a Moderate Risk of strong to severe storms Sunday

## Southeast California (Imperial and Eastern Riverside Counties)



Heat

### Impacts:

- Extreme Risk for heat-related illnesses for entire population, pets, and livestock due to long duration heat, with little to no relief overnight.

### Timing:

Major to Extreme HeatRisk through Saturday; Moderate HeatRisk beginning Sunday

- **Excessive Heat Warning** in effect through this evening - except El Centro and Blythe areas through Saturday



Thunderstorms

### Impacts:

Areas of strong gusty winds, dense blowing dust, possible localized brief heavy rainfall

### Timing:

Saturday through Tuesday

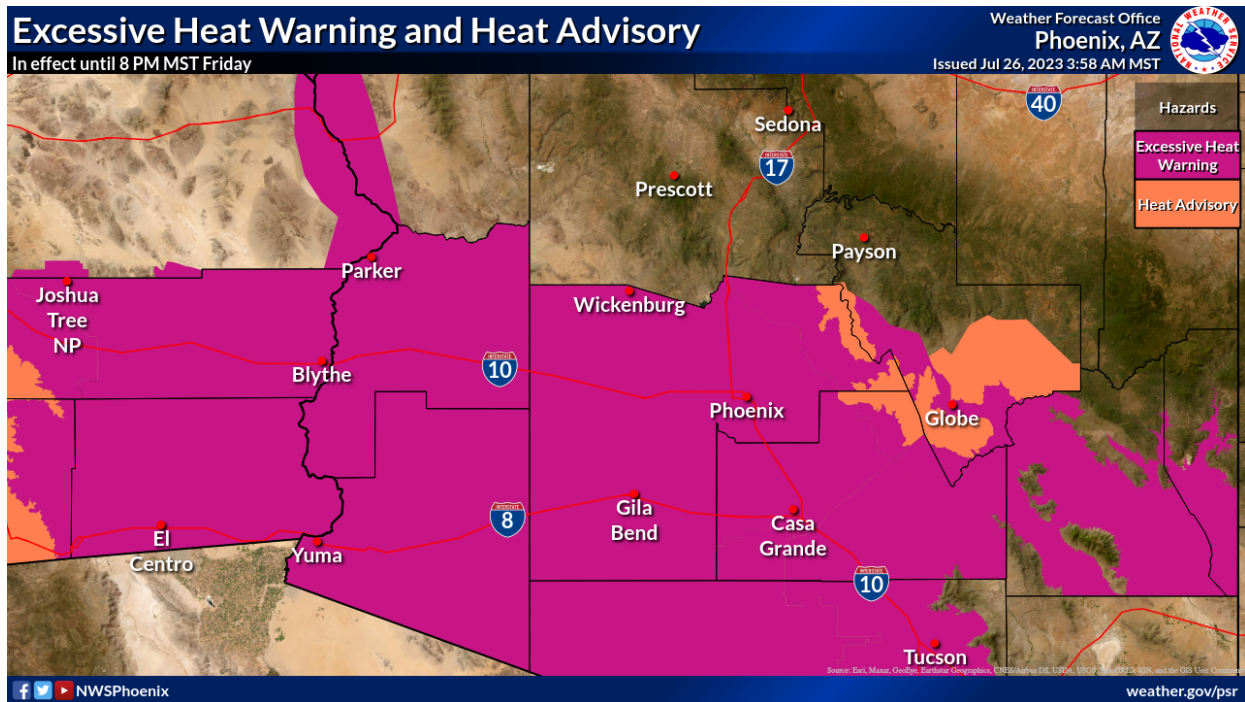
- Isolated thunderstorms Saturday evening/night (less than 20% chance)
- Scattered storms possible Sunday through Tuesday (30-40% chance)
- Moderate Risk of strong to severe storms Monday afternoon

## FOR MORE INFORMATION

For the latest forecast updates, visit [weather.gov/phoenix](https://weather.gov/phoenix).

If you have questions or would like to submit weather reports, photos, or to unsubscribe from these briefings, email [nws.phoenix@noaa.gov](mailto:nws.phoenix@noaa.gov) or call **Media - (602) 275-7417; EM - (602) 275-7003**.

## GRAPHICS



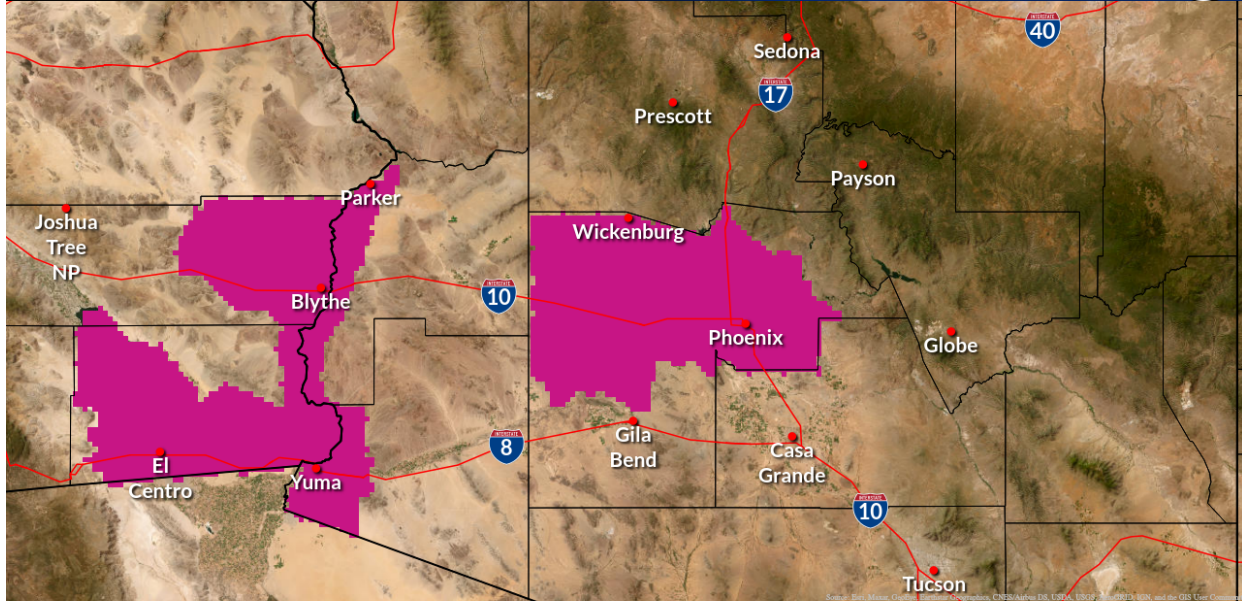
23-07-26\_Excessive\_Heat.png

# Excessive Heat Warning - Extension

Effective Saturday July 29, 2023

Weather Forecast Office  
Phoenix, AZ

Issued Jul 27, 2023 3:04 AM MST



NWSPhoenix

weather.gov/psr

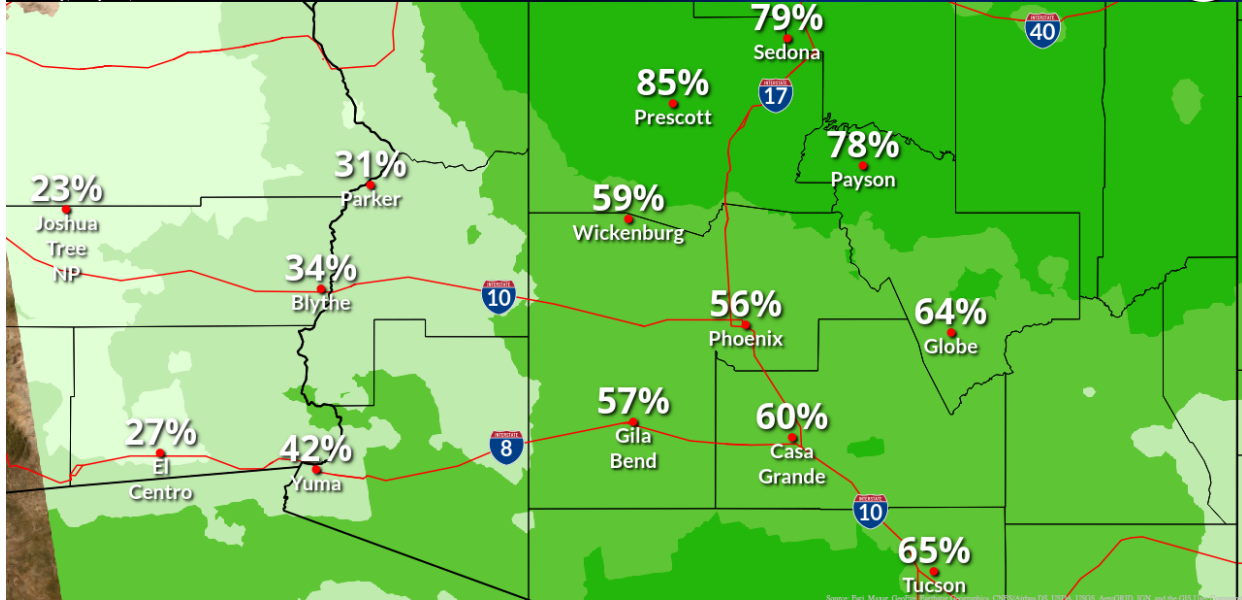
23-07-27\_EHW\_EXT.png

# Chance of Thunderstorms

Sunday, July 30, 2023

Weather Forecast Office  
Phoenix, AZ

Issued Jul 28, 2023 2:56 AM MST



NWSPhoenix

weather.gov/psr

23-07-28\_storm\_chances.png