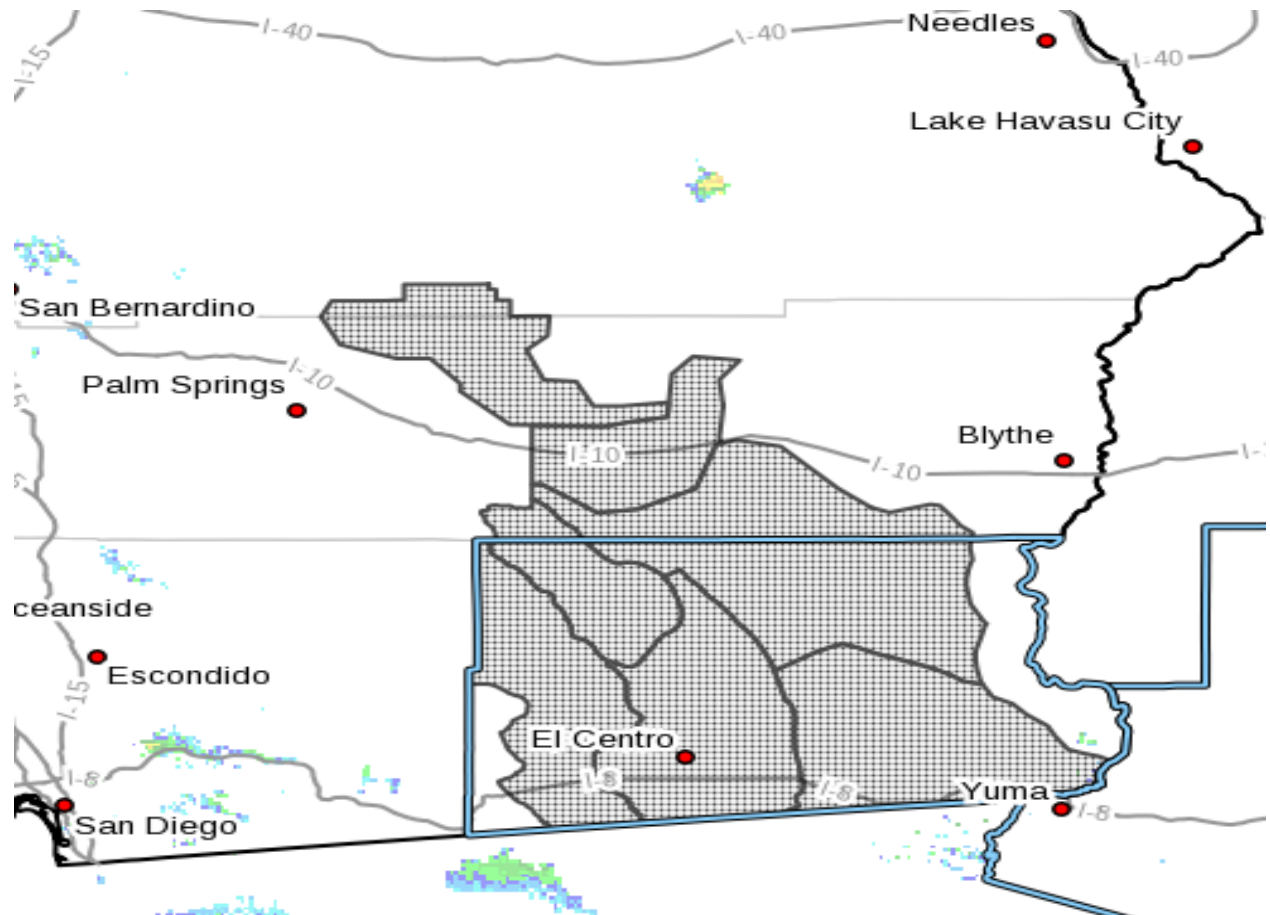


Wind Advisory

In effect starting 12:00PM Wednesday, March 29th, 2023 to 2:00AM Thursday, March 30th, 2023



Affected areas: Western portion of Joshua Tree National Park, Salton Sea, Chuckwalla Mountains, Southeastern Imperial County, Western Imperial County, Imperial Valley and Chiriaco Summit.

WHAT...

West winds 20 to 30 mph with gusts up to 45 mph expected.

IMPACTS...

Difficult driving conditions, especially for larger vehicles traveling along roads with crosswinds. Light, unsecured objects may become airborne. Minor tree damage possible.

PRECAUTIONARY/PREPAREDNESS ACTIONS...

Be ready for a sudden drop in visibility. If you encounter blowing dust or blowing sand on the roadway or see it approaching, pull off the road as far as possible and put your vehicle in park. Turn the lights all the way off and keep your foot off the brake pedal.

Remember, pull aside, stay alive.

A Wind Advisory means that sustained wind speeds of between 30 and 40 mph are expected, or wind gusts of between 40 and 58 mph. Winds this strong can make driving difficult, especially for high profile vehicles. In addition, strong winds over desert areas could result in briefly lowered visibilities to well under a mile at times in blowing dust or blowing sand. Use extra caution.