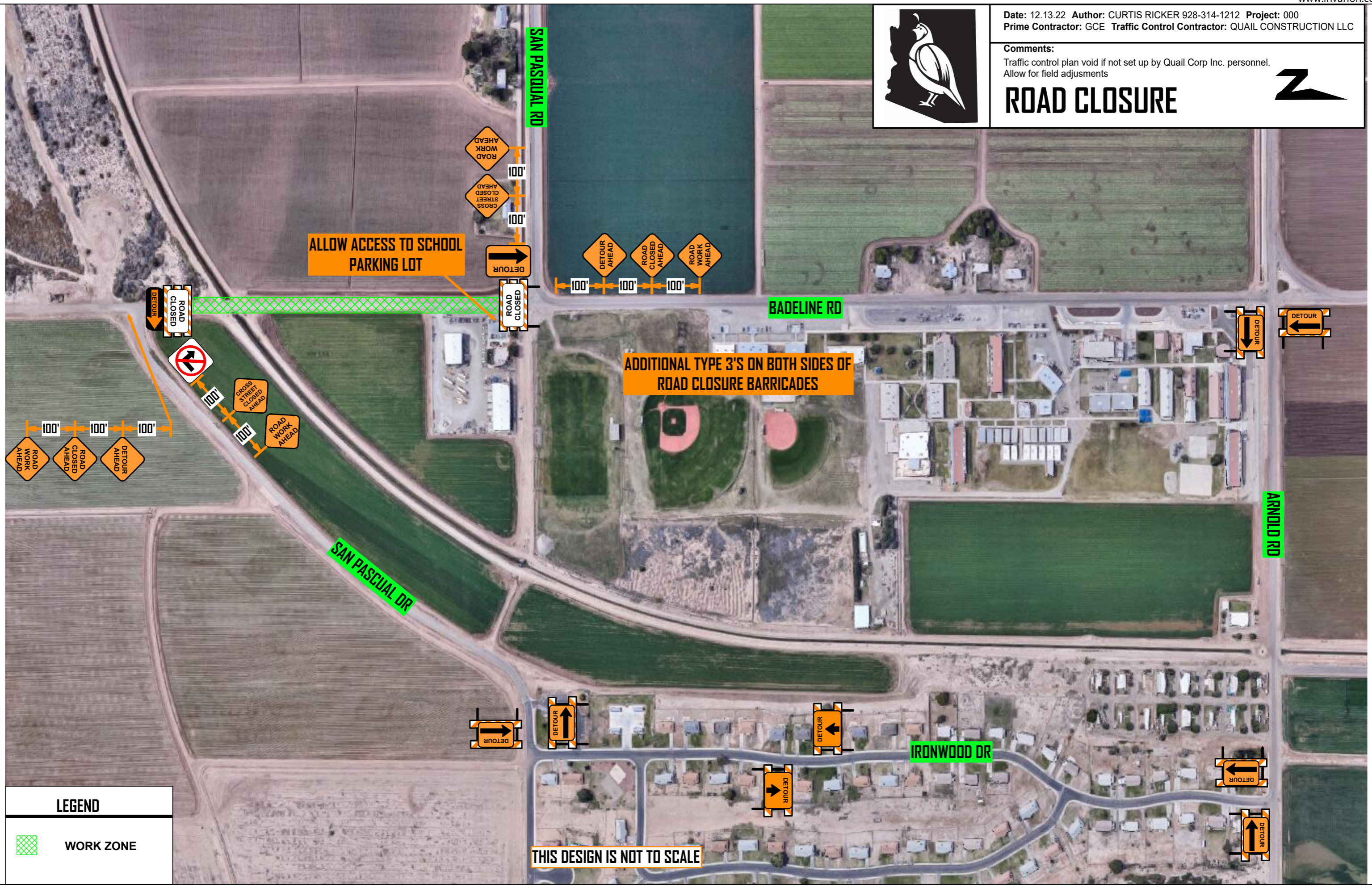




Date: 12.13.22 Author: CURTIS RICKER 928-314-1212 Project: 000
Prime Contractor: GCE Traffic Control Contractor: QUAIL CONSTRUCTION LLC

Comments:
Traffic control plan void if not set up by Quail Corp Inc. personnel.
Allow for field adjustments

ROAD CLOSURE



ALLOW ACCESS TO SCHOOL PARKING LOT

ADDITIONAL TYPE 3'S ON BOTH SIDES OF ROAD CLOSURE BARRICADES

THIS DESIGN IS NOT TO SCALE

LEGEND

 WORK ZONE